

Issue 35

In this issue, we will assemble the auxiliary components, including the clutch master cylinder and brake booster, then attach them to the bulkhead assembled in Issue 34 and complete the wiring. Finally, fit the bulkhead to the chassis assembled up to Issue 33.



Assemble the Bulkhead(2) and fit it to the Chassis

※ In this guide "Left" or "(L)", and "Right" or "(R)", refer to the direction as viewed from the driver's seat.



- 35-A** Vacuum Sensor
- 35-B** Centre Plate
- 35-C** Heater Water Valve
- 35-D** Windscreen Washer Valve
- 35-E** Clutch Master Cylinder
- 35-F** Cluth Master Cylinder Cap
- 35-G** Brake Reservoir Tank Cap
- 35-H** Brake Reservoir Tank
- 35-I** Brake Master Cylinder
- 35-J** Brake Booster (1)
- 35-K** Brake Booster (2)
- 35-L** Vacuum Check Valve
- AP Screw** (1.7×4 mm) ×5+Spare
- XP Screw** (2.3×4 mm) ×3+Spare
- Vinyl Tube

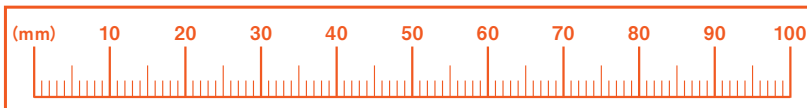
※The parts used in this assembly guide may differ in certain specifications from the parts supplied.
 ※Unless otherwise specified in the assembly instructions, please use a No. 1 Phillips screwdriver for assembly.

View the follow-along video

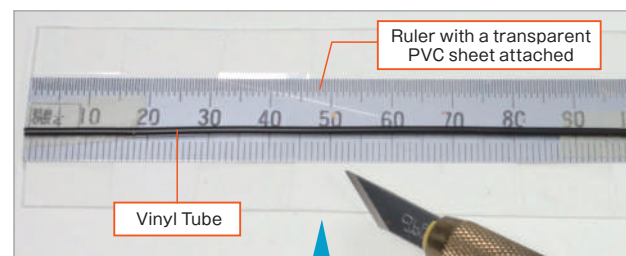
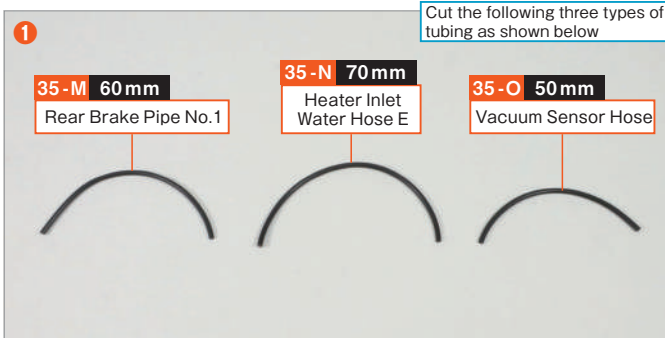


※Due to the model's design, the shapes of some parts may differ from those of the real vehicle.

step 1 Prepare the wiring

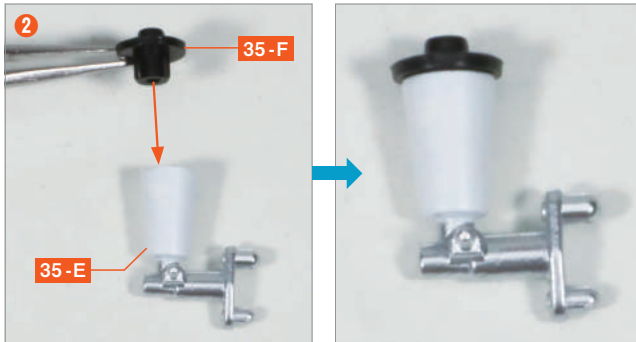


Cut the wiring used in Step 3 from the vinyl tube. Use the ruler on the left, or make a simple measuring tool as shown below, then cut the tubing to length with a craft knife or scissors while measuring carefully.

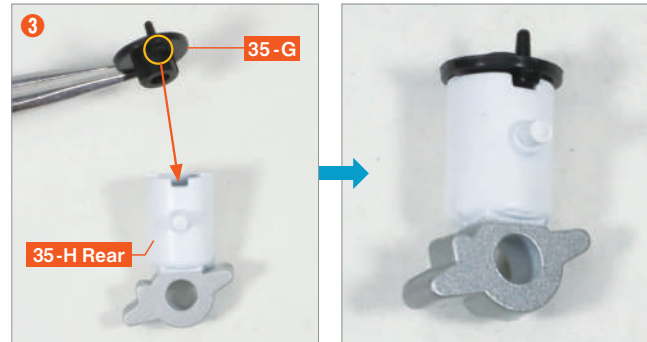


To avoid damaging the ruler, attach a transparent PVC sheet to the ruler, temporarily secure the vinyl tube with double-sided tape, and cut it with a craft knife.

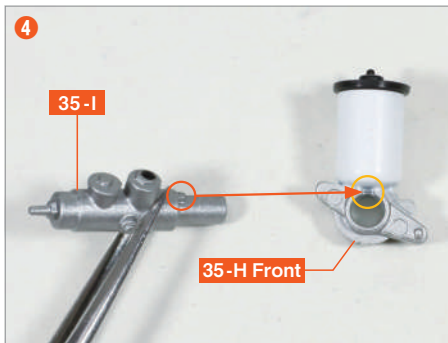
step 2 Assemble the auxiliary components



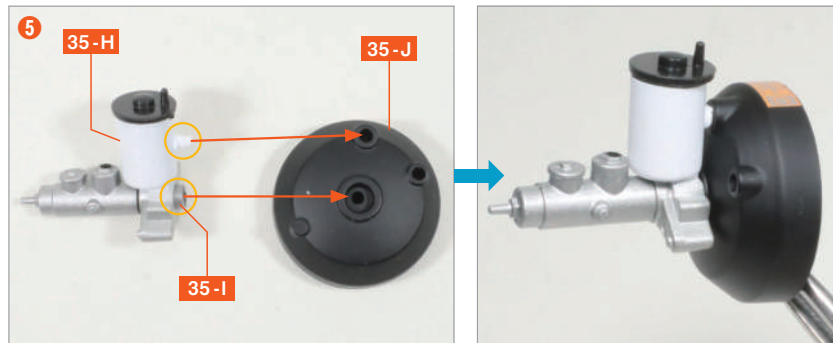
Fit the protrusions of the **35-F Clutch Master Cylinder Cap** into the holes in the **35-E Clutch Master Cylinder**.



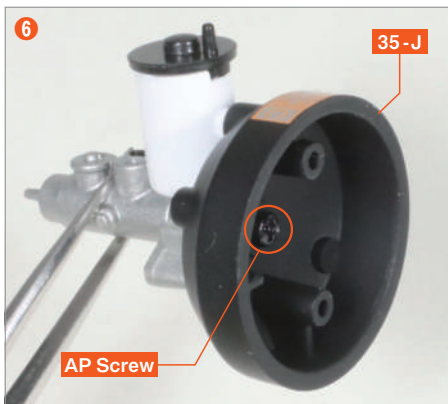
Fit the protrusions of the **35-G Brake Reservoir Tank Cap** into the holes and the notch on the reverse side of the **35-H Brake Reservoir Tank**.



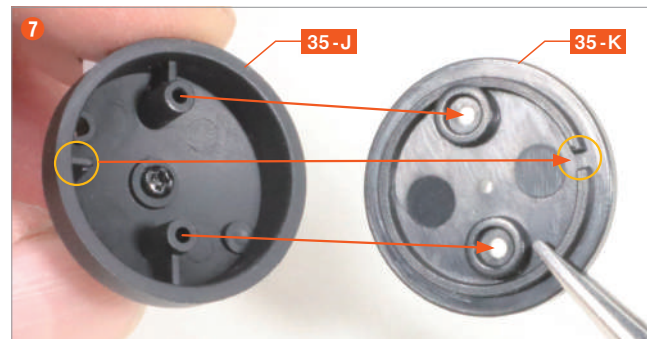
Fit the protrusion of the **35-I Brake Master Cylinder** into the hole and notch on the front side of **35-H**.



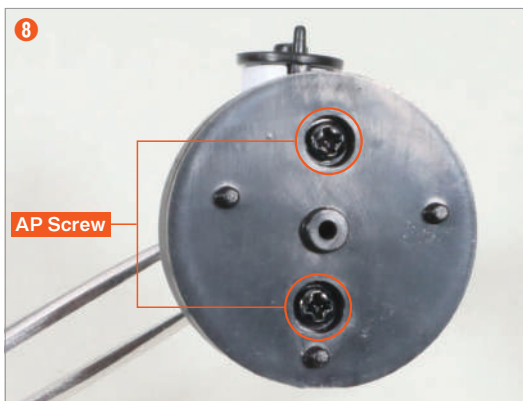
Fit the protrusions of **35-H** and **35-I** into the two holes in the **35-J Brake Booster (1)**.



Secure it from the reverse side of **35-J** with an **AP screw**.



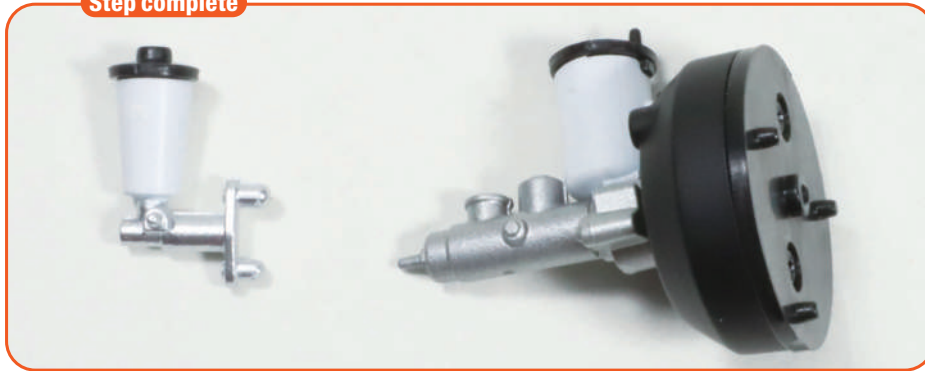
Fit the protrusions of **35-J** into the notch and the two screw holes on the reverse side of the **35-K Brake Booster (2)**.



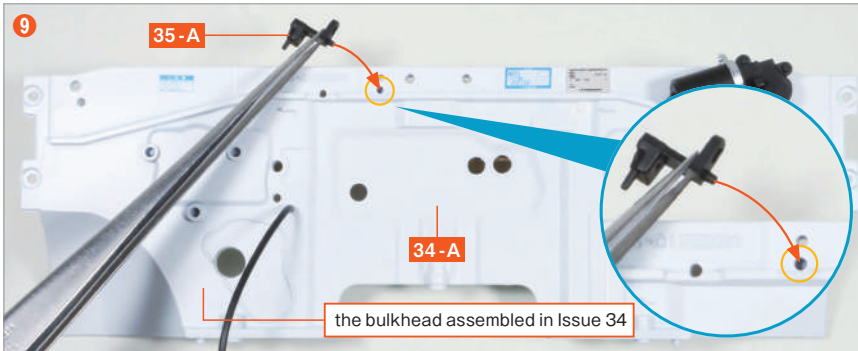
Secure the two points with **AP screws**.



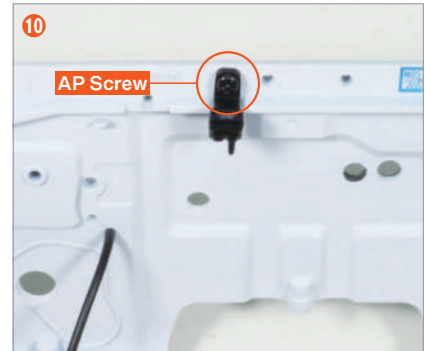
Step complete



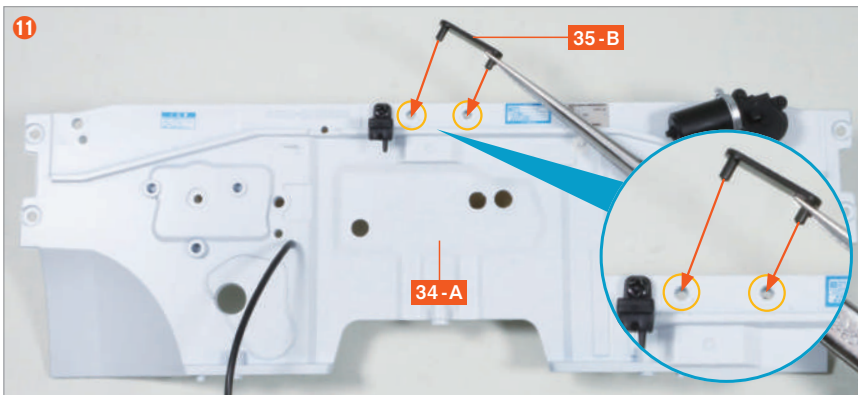
step 3 Attach the Parts and Wiring to the Bulkhead



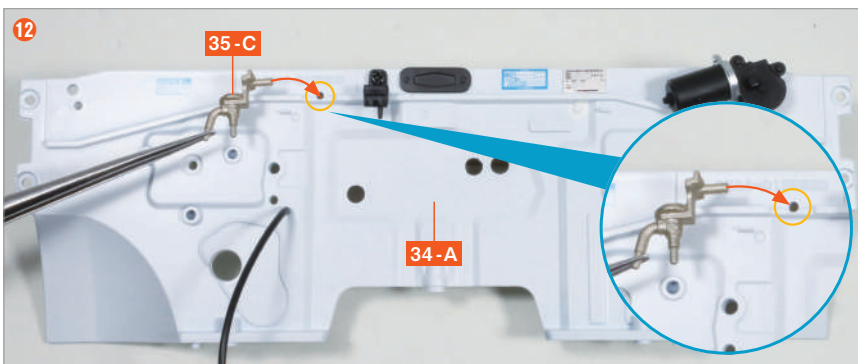
Prepare the bulkhead assembled in Issue 34, insert the protrusion of the **35-A Vacuum Sensor** into the hole in **34-A**, and align the screw holes.



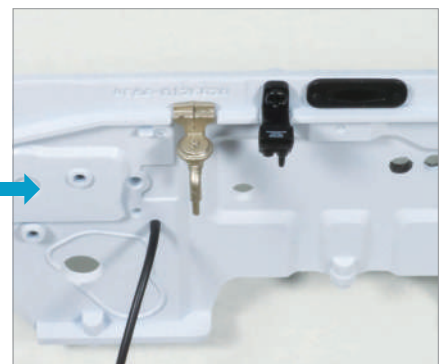
Secure it with an **AP screw**.

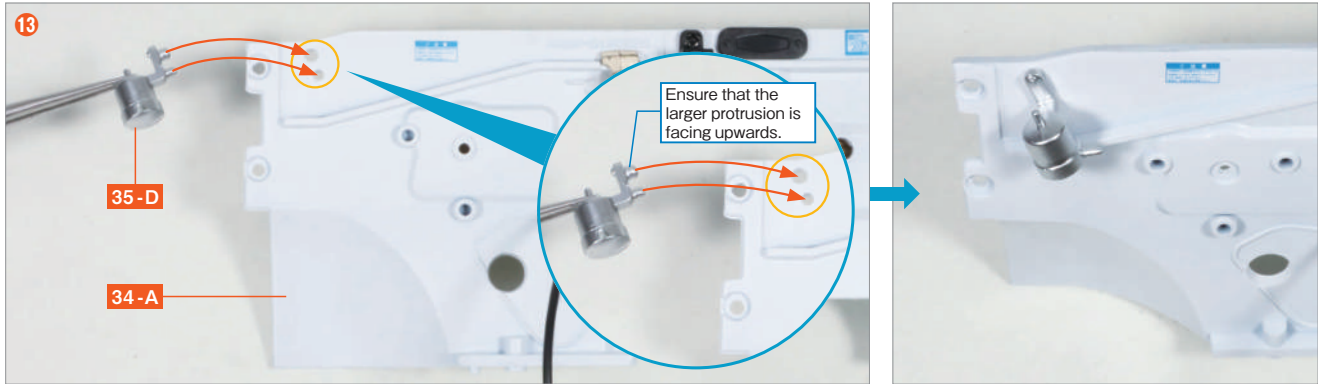


Insert the two protrusions of the **35-B Centre Plate** into the two holes in **34-A**.

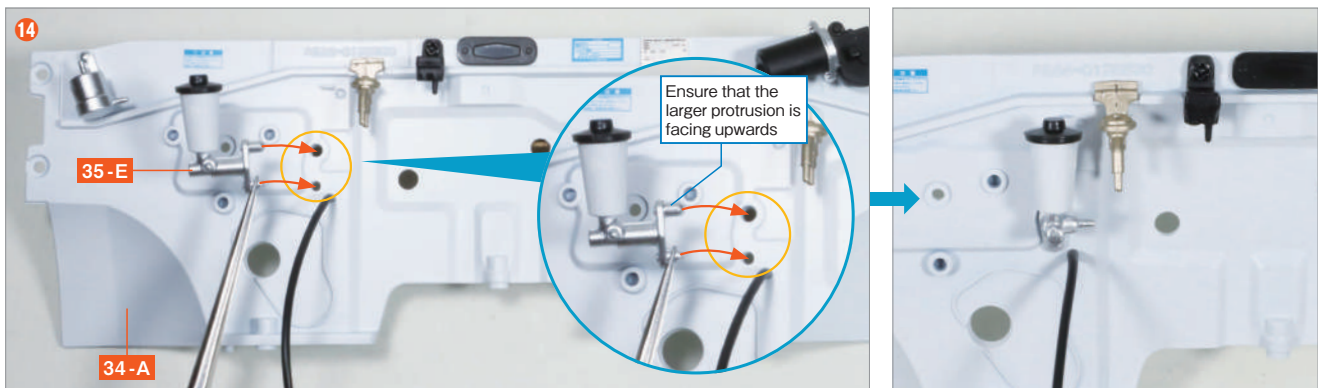


Insert the protrusion of the **35-C Heater Water Valve** into the hole in **34-A**.

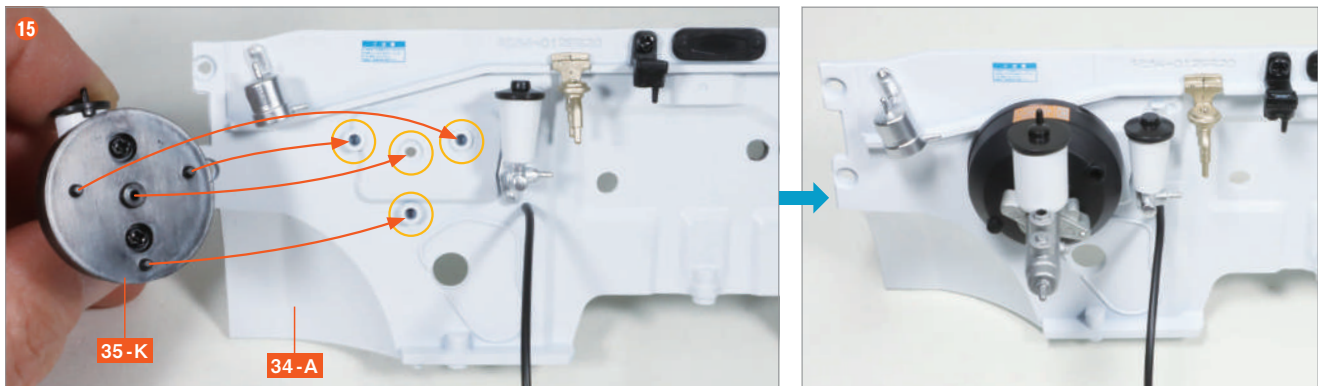




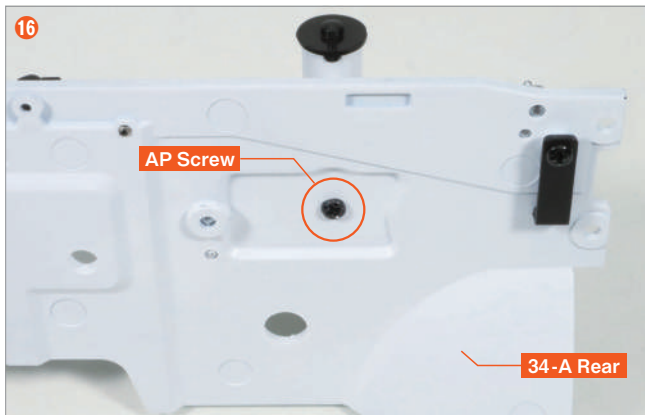
Insert the two protrusions of the **35-D Windscreen Washer Valve** into the two holes in **34-A**.



Insert the two protrusions of **35-E** into the two holes in **34-A**.

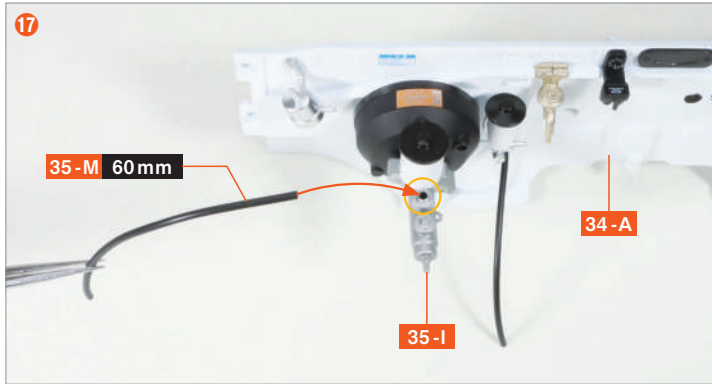


Insert the three protrusions and the central screw hole protrusion of **35-K** into the four holes in **34-A**.

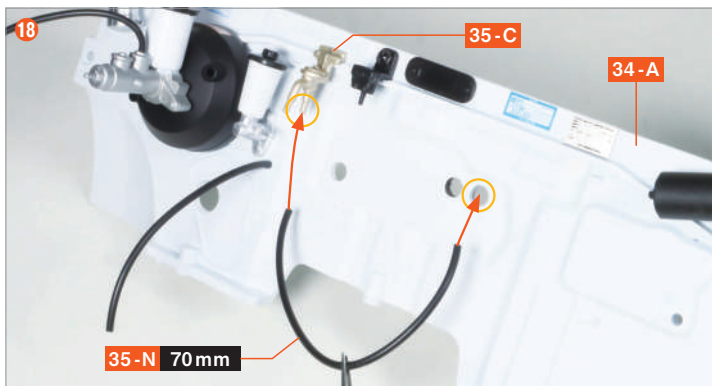


! If the parts are too tight and difficult to insert in Steps 13 to 15, slightly enlarge the holes in **34-A** using a diamond file or similar tool, or carefully trim the protrusions on the parts with a knife. However, take care not to remove too much material, as this may make the fit loose and cause the parts to come off easily.

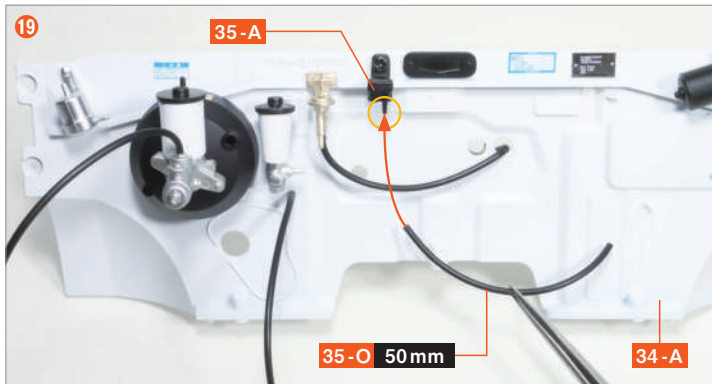
While holding **35-K** in place to prevent it from coming loose, turn **34-A** over and secure it with an **AP screw**.



Insert the **35-M Rear Brake Pipe No.1** cut in Step 1 into the hole in **35-I**.



Insert one end of the **35-N Heater Inlet Water Hose E** cut in Step 1 into the rear protrusion of **35-C**, and insert the other end into the hole in **34-A**.

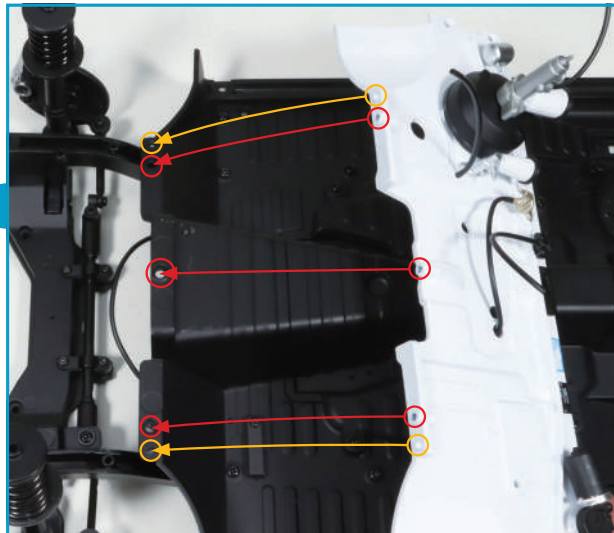
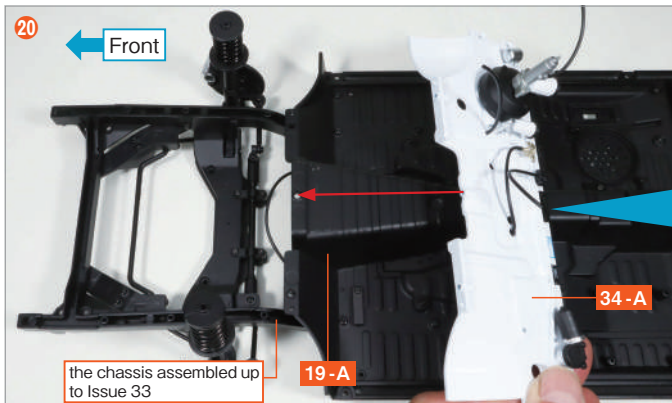


Insert the **35-O Vacuum Sensor Hose** cut in Step 1 into the protrusion on **35-A**.

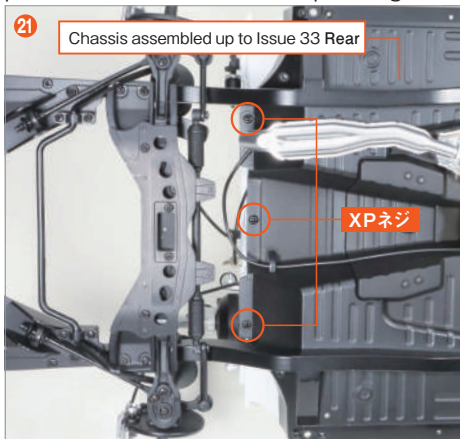
Step complete



step 4 Attach the Bulkhead to the Chassis



Prepare the chassis assembled up to Issue 33, and align the three screw holes marked with red circles at the front of the **19-A Floor Pan** with the protrusions on the screw holes of **34-A**. Then align the two holes marked with yellow circles in **19-A** with the two protrusions on **34-A** and fit the parts together.



While holding **34-A** in place to prevent it from coming loose, turn the entire chassis over and secure the three points with **XP screws**.

Complete

Assembly up to Issue 35 is now complete.

The area in front of the installed firewall bulkhead will become the Trueno's engine compartment. The vacuum check valve will be used in a later issue. Please keep it in a safe place to avoid losing it.

Assembly of the engine compartment will begin in Issue 36.

